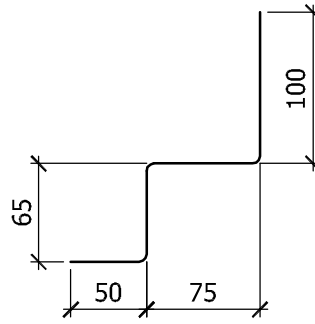


*Z flashing for concrete paving
All steel 0.55 gauge or
aluminium 1.5mm*



*W flashing for sheet decking
All steel 0.55 gauge or
aluminium 1.5mm*

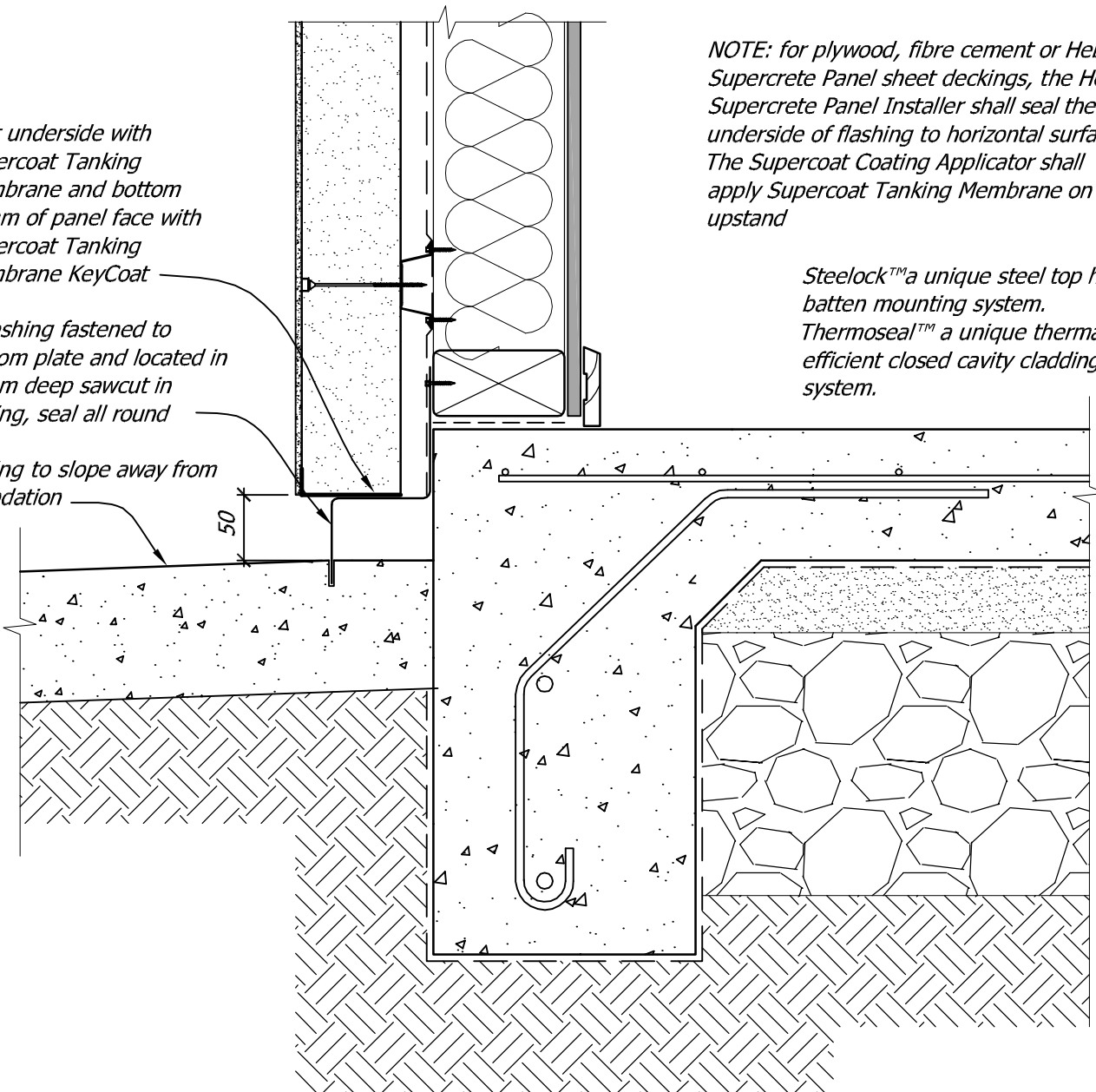
*Coat underside with
Supercoat Tanking
Membrane and bottom
20mm of panel face with
Supercoat Tanking
Membrane KeyCoat*

*Z flashing fastened to
bottom plate and located in
16mm deep sawcut in
paving, seal all round*

*Paving to slope away from
foundation*

*NOTE: for plywood, fibre cement or Hebel
Supercrete Panel sheet deckings, the Hebel
Supercrete Panel Installer shall seal the
underside of flashing to horizontal surface.
The Supercoat Coating Applicator shall
apply Supercoat Tanking Membrane on
upstand*

*Steelock™ a unique steel top hat
batten mounting system.
Thermoseal™ a unique thermally
efficient closed cavity cladding
system.*



Typical detail for finishing panel above paving or solid decking



Title: **Finishing Hebel Supercrete Panel
above Paving or Decking**

Date: September 2011

Scale: 1:5

Detail No. **HPC 6-9**

This drawing must be read in conjunction with the Hebel Supercrete 75mm Panel Cladding Design Guide Part 2