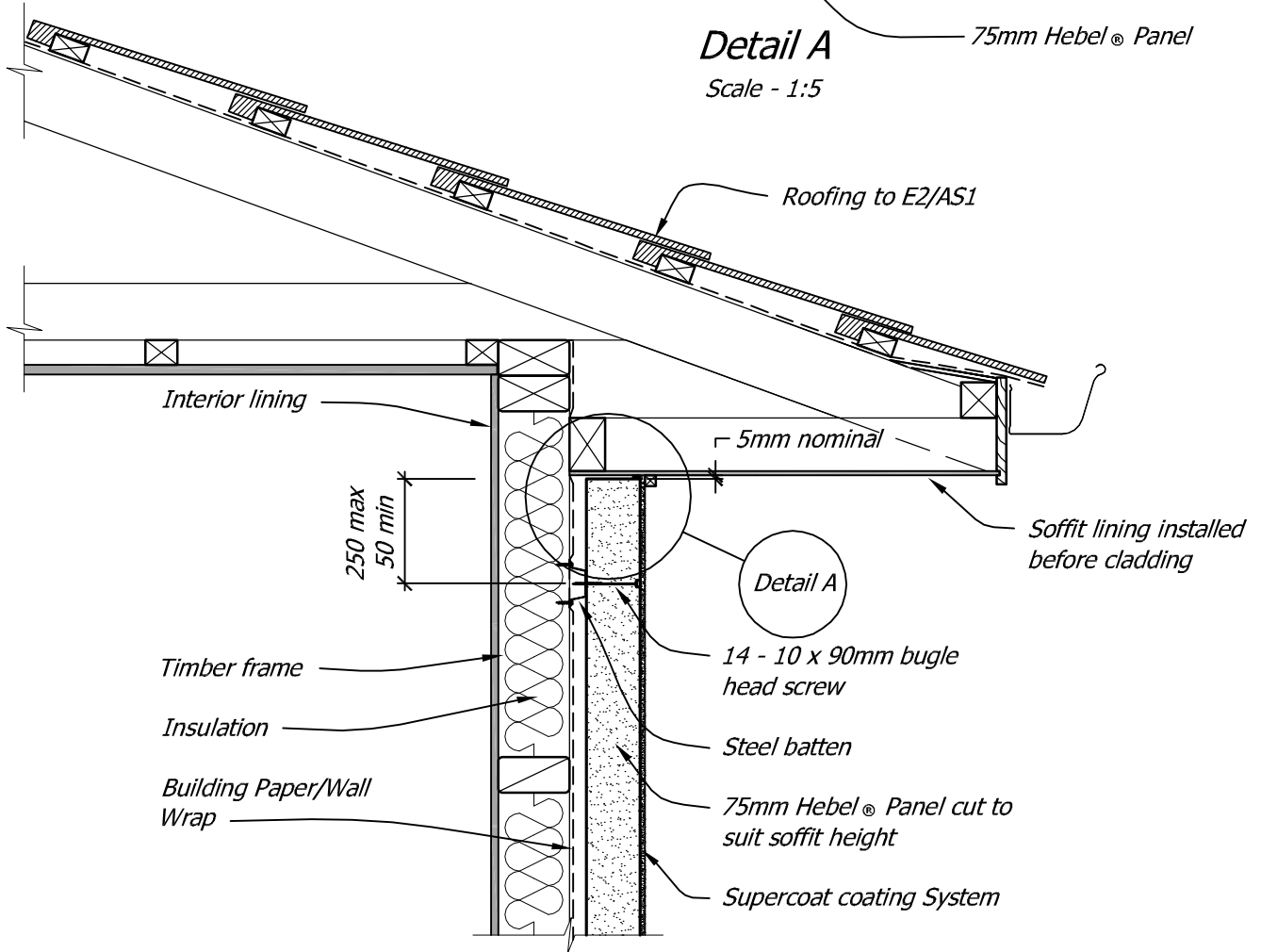


Detail A

Scale - 1:5



Steelock™ a unique steel top hat batten mounting system.
Thermoseal™ a unique thermally efficient closed cavity cladding system.

Title:

Hebel® Panel to Eave/Soffit Junction

Date. September 2011

Scale: 1:10

Detail No. **HPC 5-1**

This drawing must be read in conjunction with the Hebel Supercrete 75mm Panel Cladding Design Guide Part 1

